

Stefani



Full Flow Undersink

In Line Water
Filtration System

Congratulations on purchasing the Stefani Full Flow Undersink Water Filtration System. Please read carefully the installation and operation manual before installing the unit.

IMPORTANT: Installation must comply with existing State and Local Plumbing codes. Plumbing Codes require the installation of this filter system to be carried out by a Licenced Plumber.

The Pressure limiting valve must be installed to ensure the correct operation of the unit and compliance to the warranty. For your convenience, a Pressure Limiting Valve is included in the box.

Please note our warranty requires proof of installation by a Licenced Plumber including water pressure testings and results.

To maintain optimum water quality you will need to replace the cartridge at least every 6 months. If the water filter slow down before your six months reminder you should replace the filter earlier.

CAUTION: The Full Flow Undersink system should only be used on water that is microbiologically safe- that is, water that has been adequately chlorinated or disinfected. Additional sterilising equipment will be required for unsafe water.

The Full Flow Undersink water filtration system is designed to operate at a maximum pressure of 862kPa (125psi); minimum pressure of 206kPa (30psi) and at a maximum temperature of 40 degree Celsius. Stefani warrants this filter to be free from defects in material and workmanship for a period of two years * from the date of purchase (* Warranty period excludes filter cartridges which are consumable items).

A pressure limiting valve is supplied with this water filtration system. This valve must also be installed as a standard equipment as it limits the pressure to 345kPa (50psi)
If the unit is to be left unused for more than 2 days, the water supply valve must be turned off.

RECOMMENDATION: If The Full Flow Undersink system has not been used for 2 or more days, you will need to flush 5 to 10 litres of water through the system before using the water
Slower flow rate gives longer contact times for better contaminant reduction.
To maintain a high level of performance and protection provided by the STEFANI water filtration system, use only STEFANI replacement filter cartridges.

HELPFUL HINT: The life and performance of filter cartridges may vary, depending on volume and quality of water being filtered. An indication, that your filter cartridges may need replacing is the reduced volume or flow from filter faucet, or the return of offensive taste and/or odour to filtered water.

We recommend you continue to check for leaks for a day after installation.

Installation Note: A water filter system/tap, like any product, has a limited life and may eventually fail. Also sometimes failure happens early due to unforeseen circumstances. To avoid possible property damage, this product should be regularly examined for leakage and/or deterioration and replace when necessary. A drain pan, plumbed to an appropriate drain or outfitted with a leak detector, should be used in those applications where any leakage could cause property damage, and /or the water supply should be turned off if no one is home/present.

INCLUDED ACCESSORY: For your convenience the following accessory is included:
Pressure Limiting Valve with dual check valve - limits the pressure to 345kPa (50psi).
For further information please contact Stefani +61 8 93506178

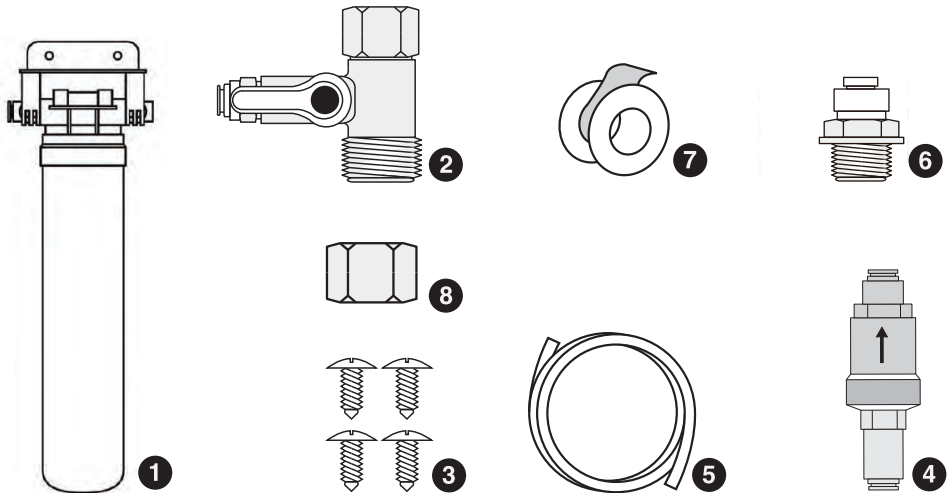
TABLE OF CONTENTS

LIST OF PARTS.....	4
INSTALLATION INSTRUCTIONS - STEP 1.....	5
INSTALLING WITH AN EXISTING MIXER TAP OR DISHWASHER TAP AND LOCATION SELECTION	
INSTALLATION INSTRUCTIONS - STEP 2.....	7
CONNECTING TO PRESSURE LIMITING VALVE	
INSTALLATION INSTRUCTIONS - STEP 3.....	7
CONNECTING TO FULL FLOW UNIT	
INSTALLATION INSTRUCTIONS - STEP 4.....	7
CONNECTING TO COLD WATER LINE	
INSTALLATION INSTRUCTIONS - STEP 5.....	7
TESTING THE UNIT	7
INSTALL AND REPLACING FILTER CARTRIDGE	8
WARRANTY.....	9
STEFANI WATEL FILTER CARTRIDGE.....	10

LIST OF PARTS

Stefani Full Flow Undersink Water Filtration System component identification & content check list:

Ref	Description	Qty
1	1 Micron Carbon Filter Cartridge	1
2	Mains connection shut off valve	1
3	Screw for Manifold Bracket ¼" Phillip Head 4 pcs/bag	1
4	1/4"QC 50PSI Pressure Limiting Valve with dual check valves	1
5	1/4" OD PE White Tube 1.5 meters	1
6	1/4"Tube x 1/2"BSP Female Adapter (Nipple Adapter)	1
7	Teflon Thread Seal Tape 1/2" x 120	1
8	1/2" BSP female end cap	1



INSTALLATION INSTRUCTION - STEP 1

The Full Flow Undersink Water Filtration System can be fixed in 2 different ways below are the options:

To find the right location, you require at least 400mm in height and sufficient access to change the filter cartridge as required on a regular basis. Avoid areas of high use to reduce the risk of hitting the housing or connections that may result in breakage or leaking

Installing with an existing mixer tap or dishwasher tap

1. Turn the main water supply off.
2. Locate the cold water supply to your kitchen sink tap or dishwasher tap.
3. Disconnect the flexible hose from the mixer or dishwasher tap (the use of a flexible hose which complies with Australian Standard is recommended) **fig.1**
4. Use the teflon plumbers tape provided to wrap around the male ends of Mains connection shut off valve and cold water supply or dishwasher tap if there are no washers in female ends, winding in a clockwise direction 7 or 8 times.
5. Fit the Mains connection shut off valve to the cold water supply or dishwasher tap, use 1/2" end cap to fit the male end of Mains connection shut off valve and Nipple adapter to flexible hose, connect shut off valve end and Nipple adapter by whole unit, please refer to **fig.2**
6. Ensure the valve is in the "OFF" position and turn the mains water on to check for any leaks on this parts of the installation. If no leaks occur, turn the mains water back off until ready to test the final installation. If leaks occur, remove the Mains connection shut off valve and retape and refit and recheck for leaks.

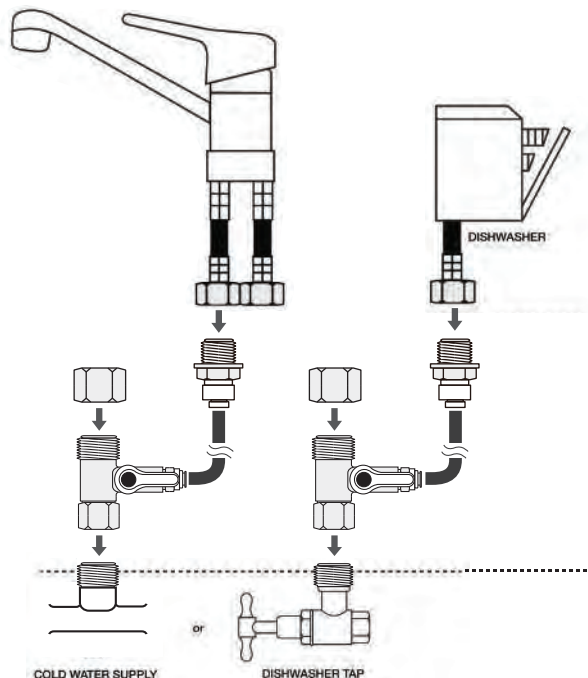
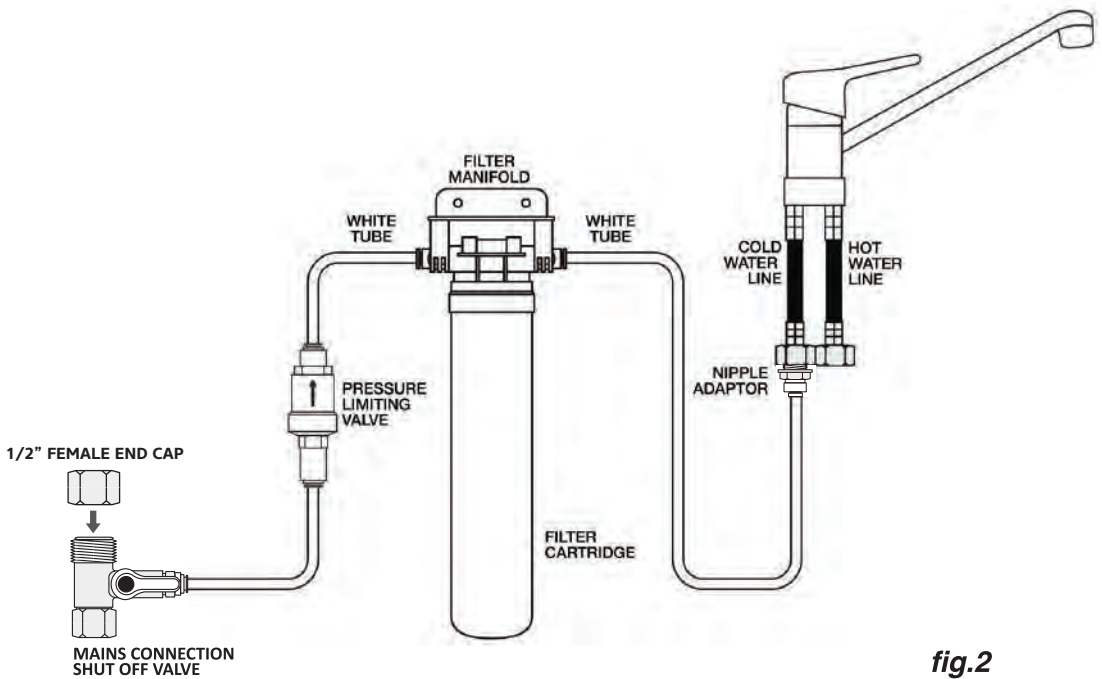
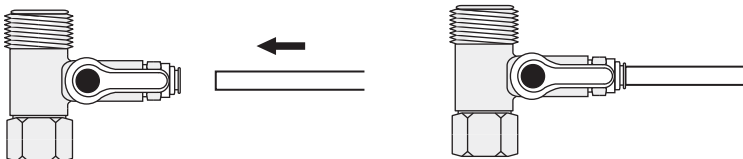


fig.1

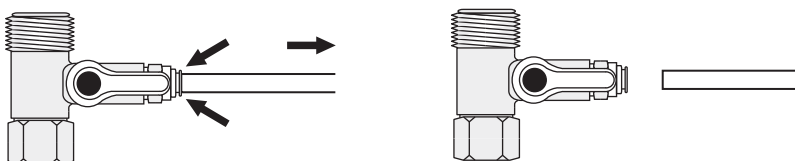


Important notes on 1/4 inch tubing:

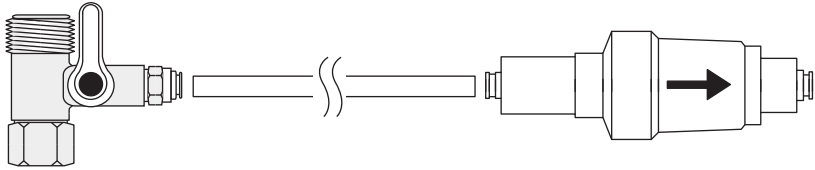
- When cutting the 1/4 inch tubing, ensure the cuts are square and clean, otherwise leaking may occur
- When connecting the tube to the quick connect system, ensure you push the tube all the way to the end, and pull slightly to seal the connection



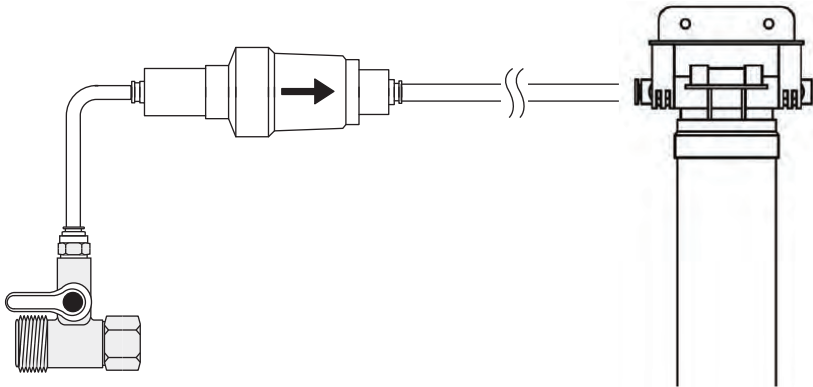
- To Disconnect, push the tubing in, press and hold collar against fitting, pull tube out of fitting.



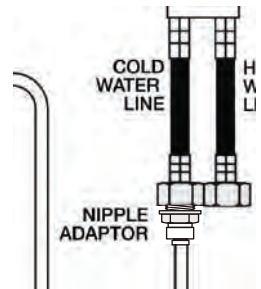
- Step 2.** Cut a length of tube approximately 200mm long and connect one end to the mains connection shut off valve and the other end to the inlet of the pressure limiting valve please ensure you check the flow direction is correct, otherwise water flow will be restricted.



- Step 3.** Cut the next length of tubing to the required length to reach from the outflow of the pressure limiting valve to the inlet of the filter housing, leaving enough flex so it is not rigid tight, and so it can be tucked neatly out of the way. Please ensure you have connected to the IN side of the filter housing.



- Step 4.** Cut the length of tube required length to reach the cold water line of your tap from the outflow of the filter-Ensure you have the tubing connected to the OUTFLOW of the filter. Attach the Nipple adapter using threaded Teflon tape. Push 1/4" tubing into the Nipple adapter ensuring it is pushed all the way. Also ensure you have connected the Nipple adapter to the COLD water inlet of your tap



- Step 5.** Test all connections for leaks by turning the mains water back on, open all valves and turn your kitchen tap on. Allow the filter to run approximately 5 minutes to allow the filter to flush any impurities clear, and at the same, check for any leaks.
Re check for leaks in the next 24 hours.

REPLACING FILTER CARTRIDGE

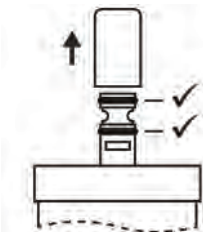
Product code to look out for replacement filter is FF6001 barcode 9319652005778

Stefani Full Flow Undersink Water Filtration System requires no tools for filter cartridge replacement. It is not necessary to turn off the main water supply when changing the filter cartridge.

1. To remove old filter cartridge, turn off the ball valve switch to cut off the water supply.
2. Turn the tap on to remove any remaining water in the system.
3. Turn the filter cartridge to the left then pull downwards and away from Filter Manifold.



4. Remove the plastic cover cap from the top of filter cartridge. Check to ensure the 2 black "O" rings are in place and not damaged.



5. Insert the new filter cartridge into Filter Manifold and turn right until it stops.



6. Turn on the faucet and allow water to run for 5 minutes to release any air trapped in the filter cartridge. You can enjoy the fresh and tasty filtered water soon after the filter cartridge is replaced.

LOW /NO MAINTENANCE REQUIRED: The only requirement is changing the filter cartridge. Filtering capacity is 7500Litre or maximum filter cartridge life expectancy is 6 months. The life and performance of filter cartridge may vary depending on volume and quality of the incoming water supply being filtered. Your filter cartridge may need replacing earlier than 6 months if you notice a reduced volume or flow from the filter faucet, or the return of an unpleasant taste/odour to the filtered water. Please contact Stefani Australasia Pty Ltd on (08) 9350 6178 or email to stefani@stefani.com.au if you require any assistance.

WARRANTY

This warranty is expressly limited to repair or replacement at our premises of any parts proving defective providing purifier has been installed in accordance with our installation instructions, and pressure and temperature do not exceed limits stated herein. This warranty does not extend to mechanical damage. Save insofar as they may be excluded by law, this warranty is given in lieu of all other expressed or implied warranties or conditions and STEFANI shall in no event be held liable for damages or delays caused by defects and assume no responsibility for unauthorised repairs.

FILTER CHANGE REMINDER

To ensure efficient performance we recommend filter cartridges are replaced every 6 months

Replacement filter code:

Code	Barcode
FF6001	9319652005778

Register online at www.stefani.com.au for a filter change reminder by email. A filter change reminder fridge magnet has been supplied for your convenience.

FF6000 / 2021 REV E /



Stefani Australasia PTY LTD
55 Bankia Road, Welshpool
Western Australia 6106
Tel: (08) 9350 6178
Email: stefani@stefani.com.au

www.stefani.com.au

